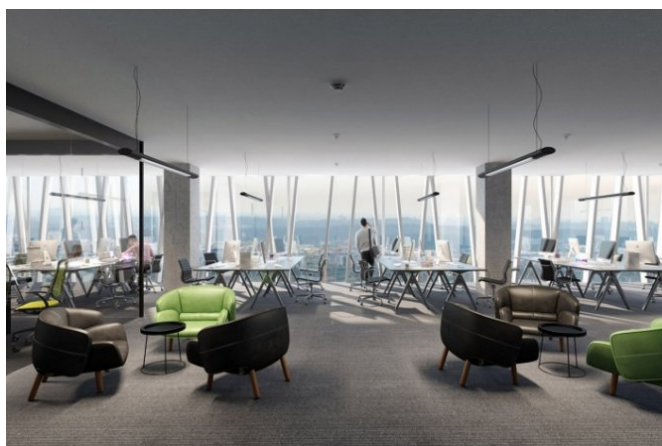
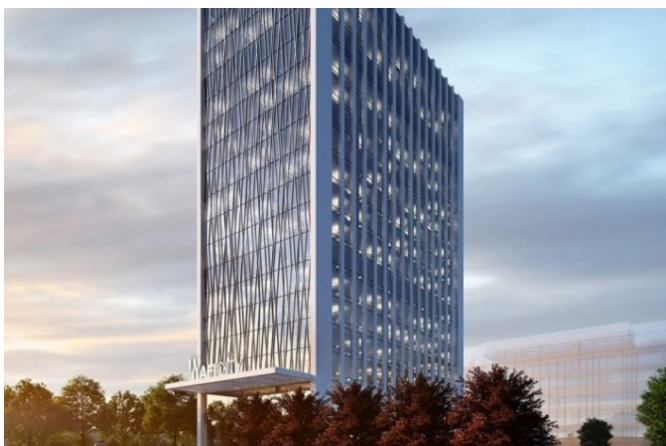


## AFI City

Kolbenova 7a, Praha 9



Price

**from 13.50 Eur/m<sup>2</sup>**

Price for services

**1 489.00 EUR / měsíc**

Offer type

**lease**

Unit area

**460 - 935 m<sup>2</sup>**

Total available area

**14 312 m<sup>2</sup>**

## Description

The multifunctional project from AFI EUROPE offers offices and retail space in the AFI CITY building for rent in Prague 9. The "A" office building is located directly on Kolbenova Street opposite Kolbenova B metro station. The offices that the building has are suitable for a demanding client who is looking for the latest technologies and standards. The project is located in a revitalized area, which is changing at a dynamic pace. A typical 915m<sup>2</sup> floor can be split between two tenants. On the roof of the building there is a terrace with a beautiful panoramic view, which is accessible to all tenants. The building offers spacious warehouses, a bike shed for cyclists, a shower and a charging station for electric cars. There are six passenger elevators in the building. The journey from the office to the city centre by car can take approximately 20 minutes.

## Parameters

Number of floors above ground	19
Total available area	14 312 m <sup>2</sup>
Parking place	120 EUR
Building approval	2020
Energy efficiency	B
Quality	A

## Equipment and services

Air conditioning	✓
Správa budovy v objektu	
Carpets	
Conference room	
PC/data network	
Double floor	✓
Fire alarm	
Internal blinds	
Kitchen	
Lift	✓

Lowered ceiling	✓
Magnetic card entry	✓
Openable windows	✓
Optical cable	✓
Parking	✓
Telephone network/lines	
Recepce	✓
Restaurant/canteen	✓
Security	✓
Smoke detector	✓
Sprinklers	✓
Terraces	✓
Private toilet	

## Available variants

13.50 - 14.75 Eur/m <sup>2</sup>	lease 460 m <sup>2</sup>	11 <sup>th</sup> floor
13.50 - 14.75 Eur/m <sup>2</sup>	lease 913 m <sup>2</sup>	4 <sup>th</sup> floor
13.50 - 14.75 Eur/m <sup>2</sup>	lease 913 m <sup>2</sup>	5 <sup>th</sup> floor
13.50 - 14.75 Eur/m <sup>2</sup>	lease 915 m <sup>2</sup>	13 <sup>th</sup> floor
13.50 - 14.75 Eur/m <sup>2</sup>	lease 917 m <sup>2</sup>	6 <sup>th</sup> floor
13.50 - 14.75 Eur/m <sup>2</sup>	lease 917 m <sup>2</sup>	7 <sup>th</sup> floor

13.50 - 14.75 Eur/m <sup>2</sup>	lease 917 m <sup>2</sup>	8 <sup>th</sup> floor
13.50 - 14.75 Eur/m <sup>2</sup>	lease 917 m <sup>2</sup>	9 <sup>th</sup> floor
13.50 - 14.75 Eur/m <sup>2</sup>	lease 917 m <sup>2</sup>	10 <sup>th</sup> floor
13.50 - 14.75 Eur/m <sup>2</sup>	lease 920 m <sup>2</sup>	11 <sup>th</sup> floor
13.50 - 14.75 Eur/m <sup>2</sup>	lease 933 m <sup>2</sup>	14 <sup>th</sup> floor
13.50 - 14.75 Eur/m <sup>2</sup>	lease 933 m <sup>2</sup>	15 <sup>th</sup> floor
13.50 - 14.75 Eur/m <sup>2</sup>	lease 935 m <sup>2</sup>	16 <sup>th</sup> floor
13.50 - 14.75 Eur/m <sup>2</sup>	lease 935 m <sup>2</sup>	17 <sup>th</sup> floor
13.50 - 14.75 Eur/m <sup>2</sup>	lease 935 m <sup>2</sup>	18 <sup>th</sup> floor
13.50 - 14.75 Eur/m <sup>2</sup>	lease 935 m <sup>2</sup>	19 <sup>th</sup> floor

## Contact the broker



Jan Novák  
+420 222 242 342  
[info@officeportal.cz](mailto:info@officeportal.cz)

Portal Jungle s.r.o., Václavské náměstí 841/3, 110 00 Praha 1, IČ: 0763750, DIČ: CZ07613750

2020 © Portal Jungle, s.r.o. Všechna práva vyhrazena.