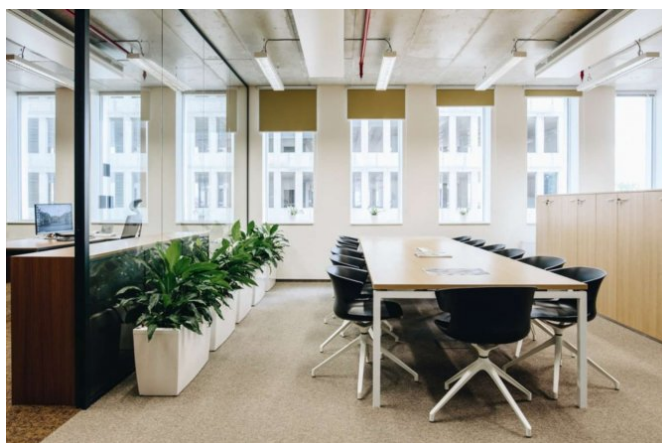
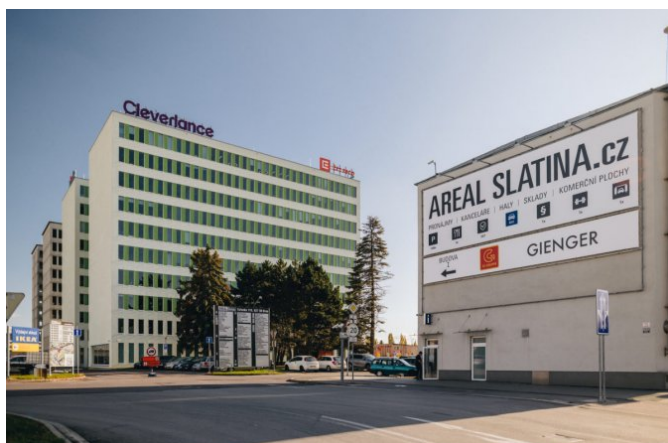


Office Portal

Slatina complex

Tuřanka 1222/115, Brno



Price

from 7.50 Eur/m²

Offer type

lease

Unit area

34 - 1 536 m²

Total available area

16 356 m²

Description

The SLATINA COMPLEX Centre was established in order to supplement the Brno industrial zone of the Černovická Terrace with technological and administrative premises. It is located in a well-accessible locality of the Brno-Slatina district, from where there is a good connection to the main roads (motorway D1 and others). The complex offers 600 parking spaces. It is located just a 3-minute drive from Brno-Turany Airport. There is a bus stop right next to the building.

Parameters

Number of floors above ground	10
Total available area	16 356 m ²
Parking place	37 EUR
Building approval	2020
Energy efficiency	A
Quality	A

Equipment and services

Air conditioning	✓
Správa budovy v objektu	
Carpets	✓
Conference room	
PC/data network	
Double floor	✓
Fire alarm	
Internal blinds	✓

Kitchen	
Lift	✓
Lowered ceiling	✓
Magnetic card entry	✓
Openable windows	✓
Optical cable	
Parking	✓
Telephone network/lines	
Recepce	✓
Restaurant/canteen	
Security	
Smoke detector	✓
Sprinklers	✓
Terraces	
Private toilet	

Available variants

7.50 - 8.90 Eur/m ²	lease 136 m ²	8 th floor
7.50 - 8.90 Eur/m ²	lease 34 m ²	8 th floor
7.50 - 8.90 Eur/m ²	lease 85 m ²	8 th floor
7.50 - 8.90 Eur/m ²	lease 440 m ²	9 th floor
7.50 - 8.90 Eur/m ²	lease 51 m ²	8 th floor

7.50 - 8.90 Eur/m ²	lease 250 m ²	9 th floor
7.50 - 8.90 Eur/m ²	lease 1 536 m ²	3 rd floor
7.50 - 8.90 Eur/m ²	lease 1 536 m ²	5 th floor
7.50 - 8.90 Eur/m ²	lease 1 536 m ²	1 st floor
7.50 - 8.90 Eur/m ²	lease 1 536 m ²	8 th floor
7.50 - 8.90 Eur/m ²	lease 1 536 m ²	6 th floor
7.50 - 8.90 Eur/m ²	lease 1 536 m ²	9 th floor
7.50 - 8.90 Eur/m ²	lease 1 536 m ²	2 nd floor
7.50 - 8.90 Eur/m ²	lease 1 536 m ²	10 th floor
7.50 - 8.90 Eur/m ²	lease 1 536 m ²	7 th floor
7.50 - 8.90 Eur/m ²	lease 1 536 m ²	4 th floor

Contact the broker



Jan Novák
+420 222 242 342
info@officeportal.cz