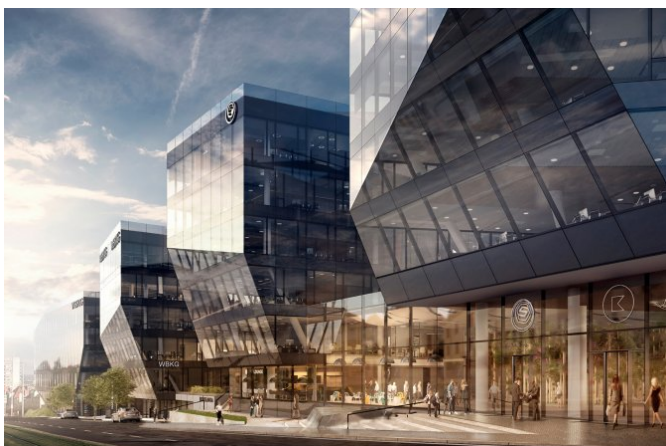


# Office Portal

## Bořislavka

Evropská, Praha 6





Price

from 15.50 Eur/m<sup>2</sup>

Offer type

lease

Unit area

599 - 1 082 m<sup>2</sup>

Total available area

7 639 m<sup>2</sup>

## Description

Offices for rent in Prague in a popular locality of Prague 6, with a wide range of shops and services in the immediate vicinity. The Bořislavka shopping centre and the entrance to the metro station (line A) are located directly in the project. Bořislavka also offers easy access by car and tram. 10 minutes from Václav Havel International Airport. Green terraces on the roofs with the view of Prague Castle. Representative reception and entrance to the office.

## Parameters

Number of floors above ground	5
Total available area	7 639 m <sup>2</sup>
Parking place	
Building approval	2020
Energy efficiency	B
Quality	A

## Equipment and services

---

Air conditioning	✓
------------------	---

---

Správa budovy v objektu	
-------------------------	--

---

Carpets	
---------	--

---

Conference room	
-----------------	--

---

PC/data network	✓
-----------------	---

---

Double floor	✓
--------------	---

---

Fire alarm	✓
------------	---

---

Internal blinds	
-----------------	--

---

Kitchen	
---------	--

---

Lift	✓
------	---

---

Lowered ceiling	✓
-----------------	---

---

Magnetic card entry	✓
---------------------	---

---

Openable windows	✓
------------------	---

---

Optical cable	✓
---------------	---

---

Parking	✓
---------	---

---

Telephone network/lines	✓
-------------------------	---

---

Recepce	✓
---------	---

---

Restaurant/canteen	✓
--------------------	---

---

Security	✓
----------	---

---

Smoke detector	✓
----------------	---

---

Sprinklers	✓
------------	---

---

Terraces	✓
----------	---

---

Private toilet	
----------------	--

## Available variants

15.50 Eur/m <sup>2</sup>	lease 622 m <sup>2</sup>	1 <sup>st</sup> floor
15.50 Eur/m <sup>2</sup>	lease 599 m <sup>2</sup>	5 <sup>th</sup> floor
15.50 Eur/m <sup>2</sup>	lease 819 m <sup>2</sup>	2 <sup>nd</sup> floor
15.50 Eur/m <sup>2</sup>	lease 797 m <sup>2</sup>	4 <sup>th</sup> floor
15.50 Eur/m <sup>2</sup>	lease 980 m <sup>2</sup>	1 <sup>st</sup> floor
15.50 Eur/m <sup>2</sup>	lease 1 025 m <sup>2</sup>	2 <sup>nd</sup> floor
15.50 Eur/m <sup>2</sup>	lease 853 m <sup>2</sup>	3 <sup>rd</sup> floor
15.50 Eur/m <sup>2</sup>	lease 1 082 m <sup>2</sup>	3 <sup>rd</sup> floor
15.50 Eur/m <sup>2</sup>	lease 862 m <sup>2</sup>	4 <sup>th</sup> floor

## Contact the broker



Jan Novák  
+420 222 242 342  
[info@officeportal.cz](mailto:info@officeportal.cz)

Portal Jungle s.r.o., Václavské náměstí 841/3, 110 00 Praha 1, IČ: 0763750, DIČ: CZ07613750

2020 © Portal Jungle, s.r.o. Všechna práva vyhrazena.