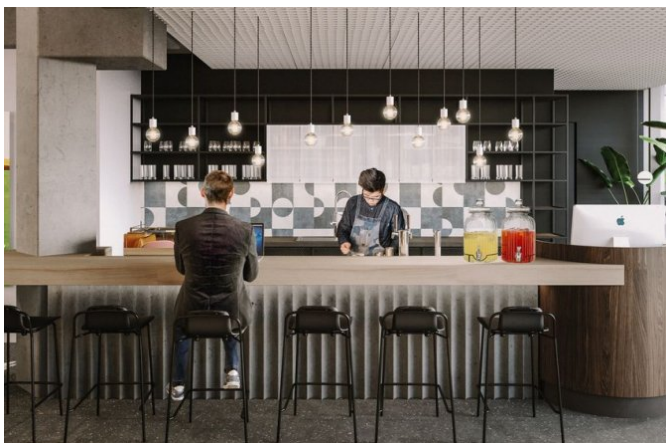
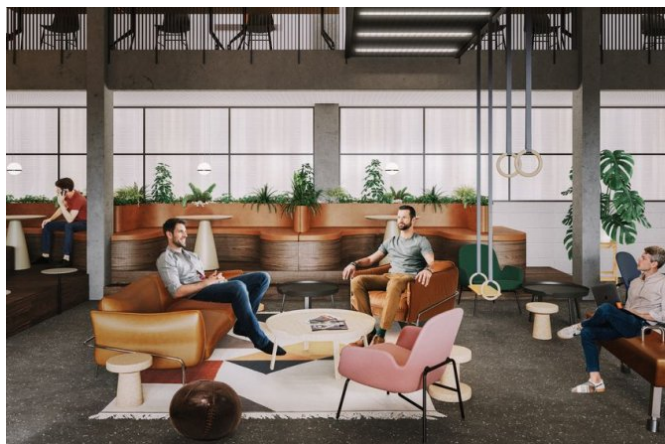
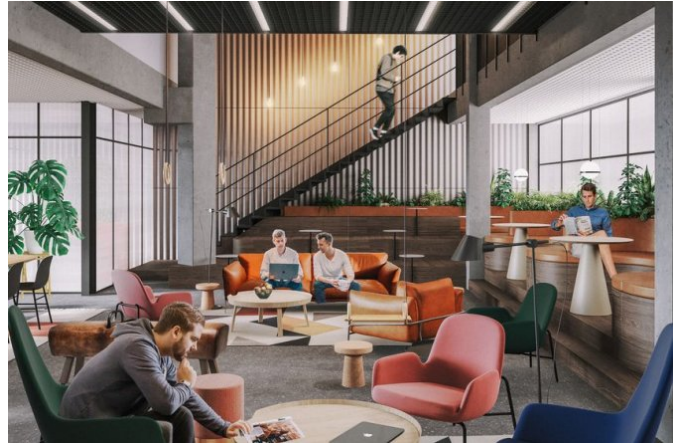


City Element

Na Strži, Praha 4





Price

On request

Offer type

coworking

Total available area

2 610 m²

Description

Representative workspaces for smaller and larger companies in a multifunctional building in the Central Business District in Pankrác. Clients appreciate the attractive and accessible location, the prestigious address and the variety of services in the building, which won the LEED award. The uniqueness of the modern centre is added, among other things, by the atrium full of greenery and the Lounge Gallery.

Parameters

Number of floors above ground

Total available area

2 610 m²

Parking place

Building approval	
Energy efficiency	G
Quality	A

Equipment and services

Air conditioning	✓
Správa budovy v objektu	
Carpets	✓
Conference room	
PC/data network	
Double floor	✓
Fire alarm	
Internal blinds	
Kitchen	
Lift	
Lowered ceiling	✓
Magnetic card entry	✓
Openable windows	
Optical cable	✓
Parking	
Telephone network/lines	
Recepce	✓
Restaurant/canteen	
Security	✓
Smoke detector	✓

Sprinklers



Terraces

Private toilet

Contact the broker



Jan Novák

+420 222 242 342

info@officeportal.cz

Portal Jungle s.r.o., Václavské náměstí 841/3, 110 00 Praha 1, IČ: 0763750, DIČ: CZ07613750

2020 © Portal Jungle, s.r.o. Všechna práva vyhrazena.