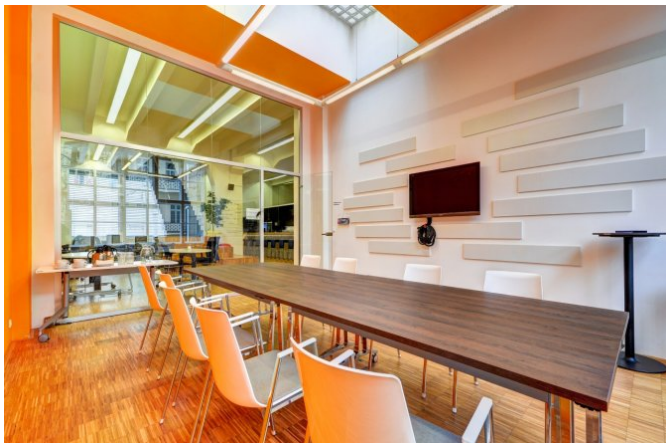


## Impact Hub Smíchov

Drtinova 557/10, Praha 5





Price

**On request**

Offer type

**lease , coworking**

Unit area

**1 000 - 1 000 m<sup>2</sup>**

Total available area

**2 557 m<sup>2</sup>**

## Description

The building of the former Smíchov printing house will surprise you with its variety and variedness. On two floors, look forward to a large open space, colourful meeting rooms with large windows to the courtyard, offices, quiet corners for concentrated work, a chillout relaxation area and a terrace for summer barbecues.

## Parameters

Number of floors above ground

2

Total available area

2 557 m<sup>2</sup>

---

Parking place

---

Building approval

---

Energy efficiency

G

---

Quality

A

## Equipment and services

---

Air conditioning

---

Správa budovy v objektu

---

Carpets

---

Conference room

---

PC/data network

---

Double floor

---

Fire alarm

---

Internal blinds

---

Kitchen



Lift

---

Lowered ceiling

---

Magnetic card entry

---

Openable windows

---

Optical cable

---

Parking

---

Telephone network/lines

---

Recepce

---

Restaurant/canteen

---

Security

---

Smoke detector

---

Sprinklers

---

Terraces



---

Private toilet

## Available variants

On request

lease

1 000 m<sup>2</sup>

---

## Contact the broker



Jan Novák

+420 222 242 342

[info@officeportal.cz](mailto:info@officeportal.cz)

Portal Jungle s.r.o., Václavské náměstí 841/3, 110 00 Praha 1, IČ: 0763750, DIČ: CZ07613750

2020 © Portal Jungle, s.r.o. Všechna práva vyhrazena.