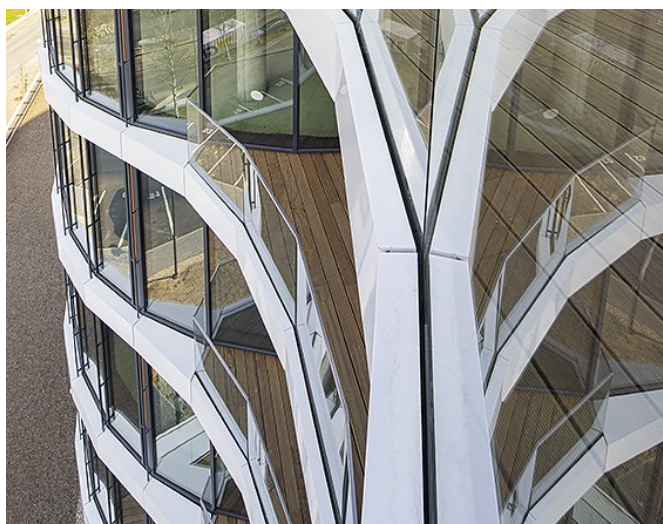


Kotelna Park Phase II

Radlická 350/107a, Praha 5



Price

from 14.50 Eur/m²

Offer type

lease

Unit area

1 920 - 1 920 m²

Total available area

7 680 m²

Description

The new phase of the Kotelna will be sensitively integrated into the Radlické Valley, offering almost 12,000 m² of new space. The project was created in the workshop of award-winning Chapman Taylor architects and will provide tenants with the highest standards of modern office space. A unique view of Prague will be possible from each spacious floor, which are designed to adapt to the needs of clients as much as possible. The individual floors will have their own unique terrace and all tenants will also be able to use the large garden for various events, sports or just relaxation. The car parks occupying two underground floors will provide a sufficient number of parking spaces for both tenants and their visitors.

Parameters

Number of floors above ground	6
Total available area	7 680 m ²
Parking place	110 EUR
Building approval	
Energy efficiency	C
Quality	A

Equipment and services

Air conditioning	✓
Správa budovy v objektu	
Carpets	✓
Conference room	
PC/data network	
Double floor	✓

Fire alarm	
Internal blinds	✓
Kitchen	
Lift	✓
Lowered ceiling	✓
Magnetic card entry	✓
Openable windows	✓
Optical cable	✓
Parking	✓
Telephone network/lines	
Reception	✓
Restaurant/canteen	
Security	✓
Smoke detector	
Sprinklers	✓
Terraces	✓
Private toilet	

Available variants

14.50 - 15.50 Eur/m ²	lease 1 920 m ²	3 rd floor
14.50 - 15.50 Eur/m ²	lease 1 920 m ²	4 th floor
14.50 - 15.50 Eur/m ²	lease 1 920 m ²	1 st floor
14.50 - 15.50 Eur/m ²	lease	

1 920 m²

2nd floor

Contact the broker



Jan Novák

+420 222 242 342

info@officeportal.cz

Portal Jungle s.r.o., Václavské náměstí 841/3, 110 00 Praha 1, IČ: 0763750, DIČ: CZ07613750

2020 © Portal Jungle, s.r.o. Všechna práva vyhrazena.