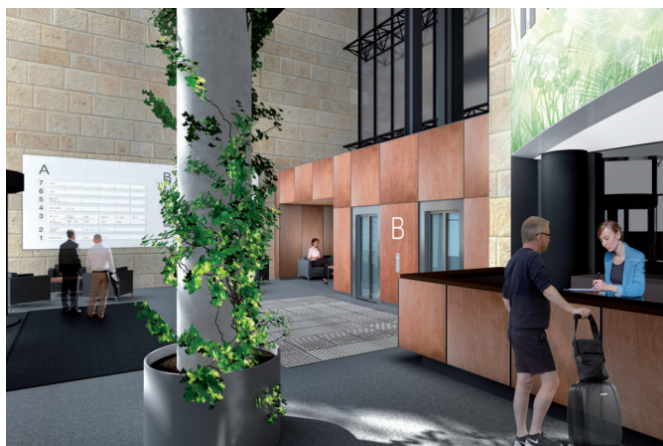


Millenium

Rumunská 655/9, Liberec



Price

from 9.00 Eur/m²

Offer type

lease

Unit area

1 000 - 1 000 m²

Total available area

1 000 m²

Description

The Millennium administrative complex was created by modernization and reconstruction of the Syner Palace, a well-known multifunctional building in an attractive location of the lower city centre. This

makes it the best administrative building not only in Liberec, but also among the modern administrative buildings of supraregional significance. The complex has office space and provides services that meet the current high demands on office buildings, required by demanding clients. Its location ensures good accessibility, both for pedestrians and vehicles. The underground parking itself has a capacity of 130 vehicles. The Fügnerova public transport terminal is in the immediate vicinity. All major institutions, local and state authorities and banks are close by.

Parameters

Number of floors above ground	
Total available area	1 000 m ²
Parking place	
Building approval	
Energy efficiency	C
Quality	A

Equipment and services

Air conditioning	✓
Správa budovy v objektu	
Carpets	✓
Conference room	
PC/data network	
Double floor	✓
Fire alarm	
Internal blinds	✓
Kitchen	
Lift	✓
Lowered ceiling	✓
Magnetic card entry	✓

Openable windows	✓
Optical cable	
Parking	✓
Telephone network/lines	
Recepce	✓
Restaurant/canteen	
Security	✓
Smoke detector	
Sprinklers	
Terraces	
Private toilet	

Available variants

9.00 Eur/m ²	lease	
	1 000 m ²	1 st floor

Contact the broker



Jan Novák
+420 222 242 342
info@officeportal.cz

Portal Jungle s.r.o., Václavské náměstí 841/3, 110 00 Praha 1, IČ: 0763750, DIČ: CZ07613750

2020 © Portal Jungle, s.r.o. Všechna práva vyhrazena.