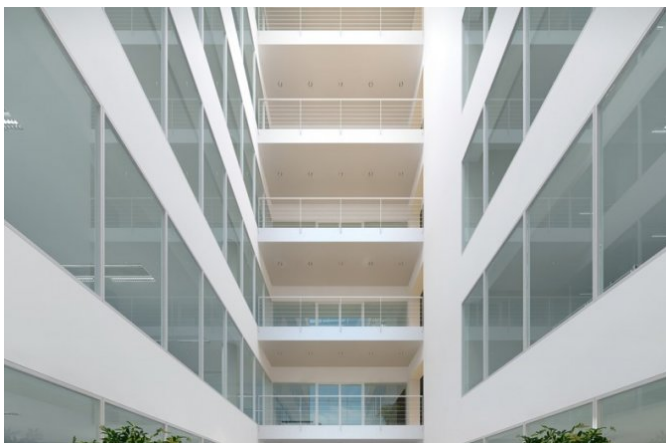
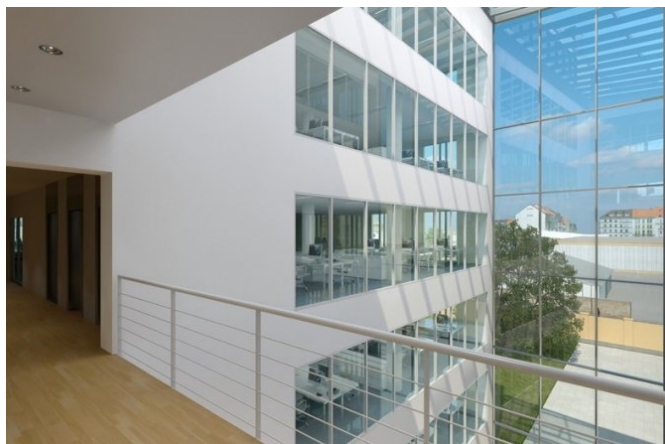


Riverview

Svornosti 2, Praha 5





Price

from 15.00 Eur/m²

Offer type

lease

Unit area

152 - 281 m²

Total available area

433 m²

Description

The Riverview office building offers a top location in the centre of Prague in the rapidly developing Smíchov, where many international companies have already located their headquarters. With its modern shape and size, the building has been non-violently integrated into the surrounding buildings, it has pure elements of Scandinavian architecture and consideration for nature. Many terraces allow an impressive view of the Vltava and Vyšehrad. The building is in a district full of services, shops and restaurants and yet it is located by the river. The main idea of Riverview's architectural design is respect for nature. The building is designed to meet the requirements of the gold LEED certificate. The location offers very good transport accessibility and all civic services. Five minutes from the building there is the entrance to the Anděl metro station, line B. The photos may differ from the units offered in the building.

Parameters

Number of floors above ground	7
Total available area	433 m ²
Parking place	110 EUR
Building approval	2020
Energy efficiency	G
Quality	A

Equipment and services

Air conditioning	✓
Správa budovy v objektu	
Carpets	✓
Conference room	
PC/data network	
Double floor	✓
Fire alarm	
Internal blinds	✓
Kitchen	
Lift	✓
Lowered ceiling	✓
Magnetic card entry	✓
Openable windows	✓
Optical cable	✓
Parking	✓
Telephone network/lines	

Recepce	✓
Restaurant/canteen	✓
Security	✓
Smoke detector	✓
Sprinklers	✓
Terraces	
Private toilet	

Available variants

8.60 Eur/m ²	lease 281 m ²	1 st floor
15.00 Eur/m ²	lease 152 m ²	1 st floor

Contact the broker



Jan Novák
+420 222 242 342
info@officeportal.cz

Portal Jungle s.r.o., Václavské náměstí 841/3, 110 00 Praha 1, IČ: 0763750, DIČ: CZ07613750

2020 © Portal Jungle, s.r.o. Všechna práva vyhrazena.